



Compressed Air System Schematics

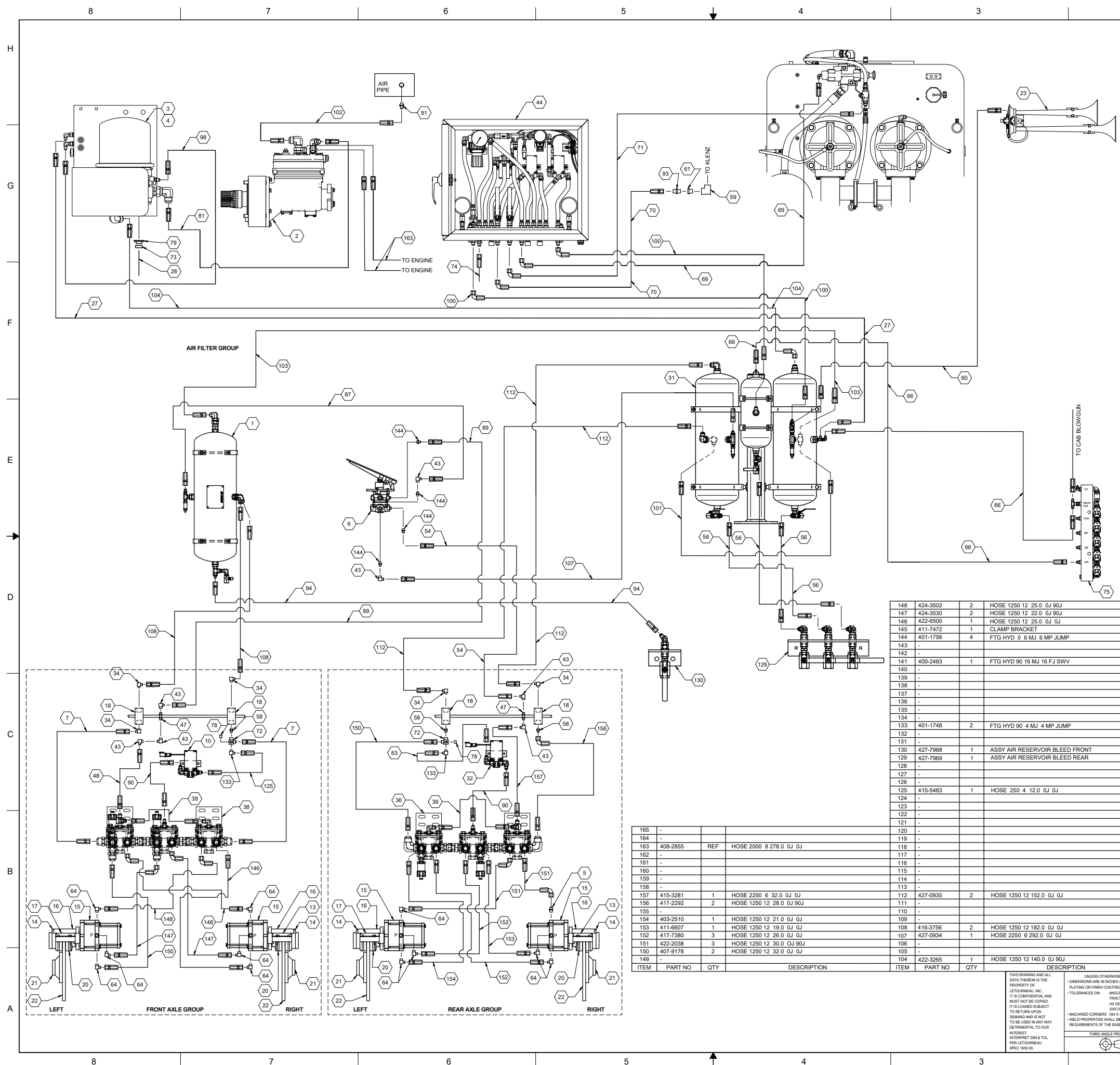
Section 05-01-08

Komatsu has made every effort to make this manual as accurate as possible based on the information available at the time of publication and printing. Continuous improvement and advancement of product design may cause changes to machines, which may not have been included in this publication. Komatsu reserves the right to make changes and improvements at any time. To ensure the most current information, please contact your service center.

For the newest version of this schematic, check the online Parts Manual database, or your Service Center.

Brake Controls Diagram

This Page Intentionally Left Blank



REVISIONS						
DATE	REV	DESCRIPTION	EN	DATE	CHK	APP
	00	RELEASED	NL12-1801	12-14-11	KMD	AY
	01	ITEM 1 WAS 4270895, IT 6 WAS 4002175, IT 10 WAS				
	01	4261177, IT 23 WAS 4213818, IT 36 WAS 4013787,				
	01	IT 38 WAS 4256383, IT 129 WAS 4189287,				
	01	IT 130 WAS 4261747, DELETE IT 8, 11, 12, 19,				
	01	24, 25, 26, 29, 30, 33, 40, 41, 42, 45, 49, 50, 51, 52, 75, 82, 99,				
	01	105, 106, 109, 113, 115, 117, 122, 126, 127, 128, 131,				
	01	132, 134, 138, 140, 142, 143, 149, 155, 160, 162, 164,				
	01	165, ADD IT 32, 146, 147, 153, QTY CHGS IT 43, 61, 70,				
	01	IT 90(3TO2), IT 58(1TO3), IT 133(5TO2), IT 141(3TO1),				
	01	CHG GRAPHICS	NL12-1849	8-14-12	KMD	AY
	02	IT 10 WAS 4272970, ADD IT 75, MRS 1845	1331872	8-15-16	KMD	JBD

103	427-0936	1	HOSE 1250 12 284.0 OJ OJ
102	421-3887	1	HOSE 1000 16 45.0 OJ OJ
101	417-7380	1	HOSE 1250 12 26.0 OJ OJ
100	411-6472	2	HOSE 2000 8 190.0 OJ 90J
99	-	-	-
98	698-9418	1	HOSE 2750 4 34.0 OJ OJ
97	-	-	-
96	-	-	-
95	-	-	-
94	408-9126	1	HOSE 2750 4 70.0 OJ OJ
93	404-0558	1	FTG HYD 0 8 MJ 12 MP JUMP
92	-	-	-
91	400-2424	1	ADAPTER STRAIGHT 1 MJ X 1 MP
90	415-5482	2	HOSE 250 4 10.0 OJ OJ
89	415-3285	1	HOSE 2250 6 334.0 OJ OJ
88	-	-	-
87	409-3109	1	HOSE 2250 6 222.0 OJ OJ
86	425-6308	1	FTG HYD 0 4 MP 12 MP
85	425-6310	1	FTG HYD 0 8 MP 12 MP
84	415-1426	1	HOSE 1000 16 31.0 OJ OJ
83	401-3788	1	PIPE RED .500 250 BSH 6000
82	-	-	-
81	426-1746	1	HOSE 1200 12 120.0 OJ OJ SS
80	-	-	-
79	425-8491	1	EXHAUST COVER
78	027-2969	2	PIPE PLG .250 CS HX
77	-	-	-
76	-	-	-
75	427-5726	REF	ASSY TRANSDUCER REAR FRAME
74	421-3975	1	HOSE 250 4 200.0 OJ OJ
73	071-1253	1	CLAMP HOSE WORM DR .81 1.75
72	424-4689	2	FTG HYD 90 12 MJ 12 FJ MOD
71	427-0933	1	HOSE 2000 8 286.0 OJ 90J
70	421-3508	1	HOSE 2000 8 136.0 OJ 90J
69	427-0932	1	HOSE 2750 4 306.0 OJ 90J
68	-	-	-
67	-	-	-
66	403-4924	2	HOSE 2750 4 80.0 OJ OJ
65	-	-	-
64	408-1386	12	FTG HYD 90 12 MJ 10 MO
63	403-4937	1	HOSE 2750 4 20.0 OJ OJ
62	-	-	-
61	419-3350	1	BUSHING, REDUCING, 1 X 3/4
60	427-0931	1	HOSE 2750 4 400.0 OJ OJ
59	021-3417	1	PIPE ELB 1.000 90
58	400-2422	3	FTG HYD 0 12 MJ 12 MP
57	-	-	-
56	424-3961	3	HOSE 2750 4 152.0 OJ OJ
55	-	-	-
54	427-0930	1	HOSE 2250 6 406.0 OJ OJ
53	008-8402	4	PLUG 3/8 NPT
52	-	-	-
51	-	-	-
50	-	-	-
49	-	-	-
48	924-2071	1	HOSE 2250 6 28.0 OJ OJ
47	405-1616	2	STRADPT 3/8MJX3/8MJ BULKHEAD
46	-	-	-
45	-	-	-
44	427-1109	1	AIR BOX
43	400-2478	7	FTG HYD 90 6 MJ 6 FJ SWVL
42	-	-	-
41	-	-	-
40	-	-	-
39	406-9124	2	HOSE 2250 6 14.0 OJ OJ
38	427-3465	1	ASSY RELAY VALVE L18/2350 FXL
37	052-7116	1	ADAPTER STRAIGHT 3/8 MJ X 1/4 MP
36	427-3473	1	ASSY RELAY VALVE L18/2350 RXL
35	403-2316	1	TEE 12
34	400-2441	5	FTG HYD 90 12 MJ 12 MP
33	-	-	-
32	427-7971	1	ASSY AIR SOLENOID REAR
31	427-3420	1	ASSY AIR TANK STAND
30	-	-	-
29	-	-	-
28	425-8493	1	EXHAUST HOSE
27	403-2077	1	HOSE 2750 4 168.0 OJ OJ
26	-	-	-
25	-	-	-
24	-	-	-
23	-	-	-
22	427-0891	1	KIT AIR HORN
21	424-8784	REF	DISC - 22 OD X 1 LARGE BRAKE
20	423-4511	REF	HUB BRAKE B40
19	424-0108	REF	CARRIER AND LINING ASSEMBLY
18	401-2924	REF	WELD COUPLING 3/4 NPT
17	424-0101	REF	TORQUE TUBE RIGHT MACHINED
16	424-0102	REF	BRAKE ACTUATOR MOUNT
15	424-8969	REF	BRAKE SPRING CYLINDER
14	424-0105	REF	MOUNT CALIPER
13	424-0103	REF	TORQUE TUBE LEFT MACHINED
12	-	-	-
11	-	-	-
10	427-7970	1	ASSY AIR SOLENOID FRONT
9	418-6237	1	HOSE 2750 4 160.0 OJ OJ
8	-	-	-
7	407-8315	3	HOSE 1250 12 30.0 OJ OJ
6	427-4390	1	ASSY DUAL BRAKE VALVE
5	402-1412	1	FTG HYD 0 10 MO 12 MJ
4	425-8482	REF	DESICCANT CARTRIDGE (SERVICE PART)
3	426-4801	1	DRYER AIR
2	426-1543	1	COMPRESSOR
1	427-7972	1	ASSY AIR RESERVOIR FRONT

148	424-3502	2	HOSE 1250 12 25.0 OJ 90J
147	424-3530	2	HOSE 1250 12 22.0 OJ 90J
146	422-6500	1	HOSE 1250 12 25.0 OJ OJ
145	411-7472	1	CLAMP BRACKET
144	401-1756	4	FTG HYD 0 6 MJ 6 MP JUMP
143	-	-	-
142	-	-	-
141	400-2483	1	FTG HYD 90 16 MJ 16 FJ SWV
140	-	-	-
139	-	-	-
138	-	-	-
137	-	-	-
136	-	-	-
135	-	-	-
134	-	-	-
133	401-1748	2	FTG HYD 90 4 MJ 4 MP JUMP
132	-	-	-
131	-	-	-
130	427-7968	1	ASSY AIR RESERVOIR BLEED FRONT
129	427-7969	1	ASSY AIR RESERVOIR BLEED REAR
128	-	-	-
127	-	-	-
126	-	-	-
125	415-5483	1	HOSE 250 4 12.0 OJ OJ
124	-	-	-
123	-	-	-
122	-	-	-
121	-	-	-
120	-	-	-
119	-	-	-
118	-	-	-
117	-	-	-
116	-	-	-
115	-	-	-
114	-	-	-
113	-	-	-
112	427-0935	2	HOSE 1250 12 152.0 OJ OJ
111	-	-	-
110	-	-	-
109	-	-	-
108	416-3756	2	HOSE 1250 12 182.0 OJ OJ
107	427-0934	1	HOSE 2250 6 292.0 OJ OJ
106	-	-	-
105	-	-	-
104	422-3265	1	HOSE 1250 12 140.0 OJ 90J

ITEM	PART NO	QTY	DESCRIPTION	ITEM	PART NO	QTY	DESCRIPTION
165	-	-	-	104	422-3265	1	HOSE 1250 12 140.0 OJ 90J
164	-	-	-				
163	408-2855	REF	HOSE 2000 8 278.0 OJ OJ				
162	-	-	-				
161	-	-	-				
160	-	-	-				
159	-	-	-				
158	-	-	-				
157	415-3281	1	HOSE 2250 6 32.0 OJ OJ				
156	417-2292	2	HOSE 1250 12 28.0 OJ 90J				
155	-	-	-				
154	403-2510	1	HOSE 1250 12 21.0 OJ OJ				
153	411-6607	1	HOSE 1250 12 19.0 OJ OJ				
152	417-7380	3	HOSE 1250 12 26.0 OJ OJ				
151	422-2038	3	HOSE 1250 12 30.0 OJ 90J				
150	407-9178	2	HOSE 1250 12 32.0 OJ OJ				
149	-	-	-				

UNLESS OTHERWISE SPECIFIED:
 DIMENSIONS ARE IN INCHES & DECIMAL FRACTIONS
 TOLERANCES ARE:
 ANGLES ±1°
 FRACTIONS ±.015
 XX DECIMAL ±.03
 XXX DECIMAL ±.015
 MACHINED CORNERS: R4 X .45
 WELD PROPERTIES SHALL MEET THE MINIMUM REQUIREMENTS OF THE BASE MATERIAL.
 THIRD ANGLE PROJECTION

FIRST USED ON CONTRACT NO. 427-0978/427-0979
 DRAWN BY M. DUKE 12-14-2011
 CHECKED BY AY 12-14-11
 ENGR BY
 PROD ENGR BY AY 12-14-11
 PROJ APPROVAL BY

LeTourneau, Inc.
BRAKE CONTROLS L-18502210&UP
LARGE BRAKE

E DO NOT SCALE 4270975 1 02
 SCALE 1/1 1 OF 2

REVISIONS						
ZONE	REV	DESCRIPTION	EN	DATE	CHK	APP
	00	RELEASED	NL12-1801	12-14-11	KMD	AY AY
	01	SEE SHEET 1	NL12-1849	8-14-11	KMD	AY AY
	02	SEE SHEET 1, MRS 1845	1331872	03-15-16	KMD	JBD JBD

